

30" LUCERNE VANITY

PRODUCT SPECIFICATIONS

Height: 38-1/2" - includes 4" backsplash

Depth: 19"

Width: 30"

Solids: Yellow Poplar

Veneers: (MPW) Engineered Oak

Panels: MDF + Plywood

Number of Doors: Two

Number of Drawers: One

USB/Power Component: Yes
(ETL5011080)

Cord Length: 6'6"

Installation Type: Floor Standing

Assembly Required: Attach the top
with sink to the cabinet

Hardware Features: European Soft
Close Hinges, Full Extension Soft Close
Glides, Adjustable Levers

Hardware Material: Hardware Material
and Finish: Zinc Alloy (BW, DPO, MPW)
Champagne Brass; (SBL) Satin Nickel

Sink Top Included: Yes

Sink Top Material: Engineered Carrara
Marble

Number of Basins: One

Faucet: 8" Widespread - not included

Basin Overflow: Yes - facing front

Fits Drain Hole Size: 1-3/8"

AVAILABLE FINISHES

 BRIGHT WHITE
MN241V30BW

 CHAMPAGNE
BRASS

 DEEP OLIVE GREEN
MN241V30DPO

 CHAMPAGNE
BRASS

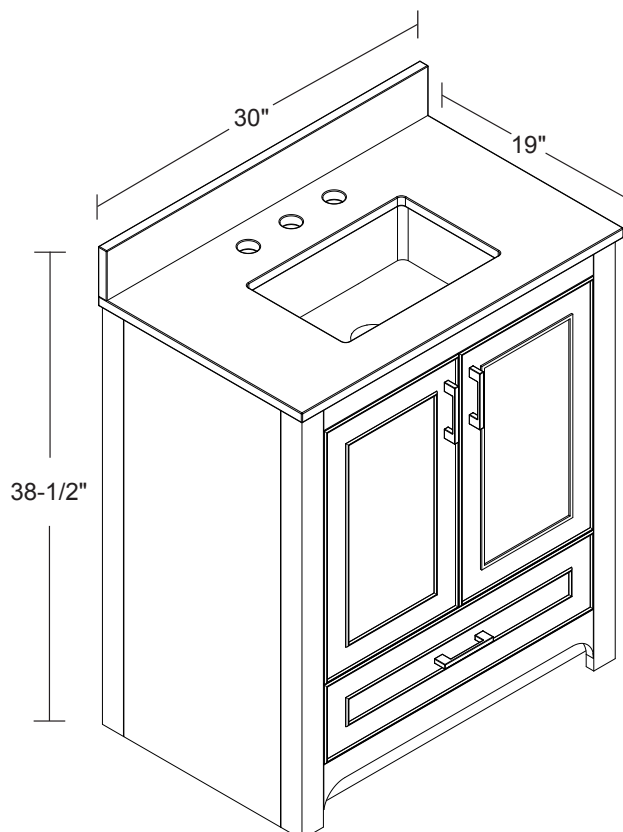
 DARK MAPLEWOOD
MN241V30MPW

 CHAMPAGNE
BRASS

 SOFT BLUE
MN241V30SBL

 SATIN NICKEL

PRODUCT DIMENSIONS



ASME A112.19.2-2018/CSA B45.1-18

SINK MODEL: F2014B

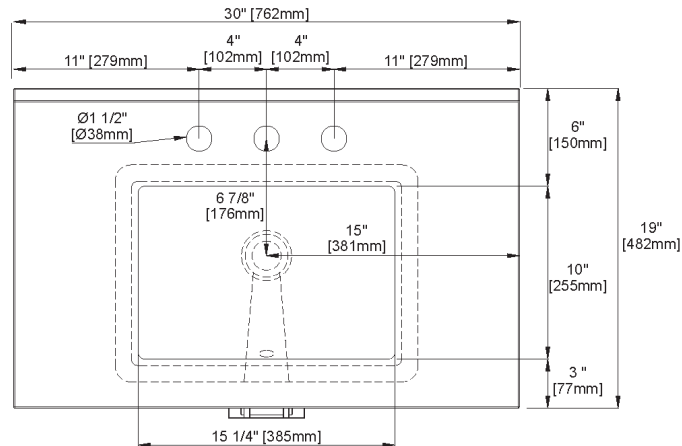
CUPC FILE NO: 14592

All dimensions are nominal

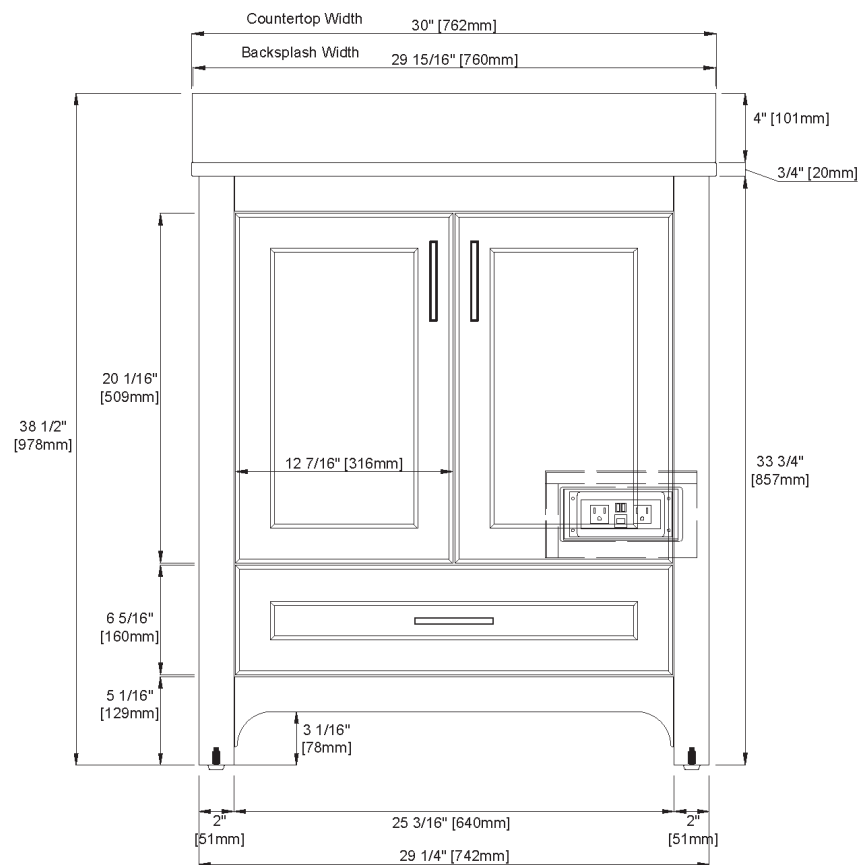
1 / 3

30" LUCERNE VANITY

PRODUCT DIMENSIONS



Top View



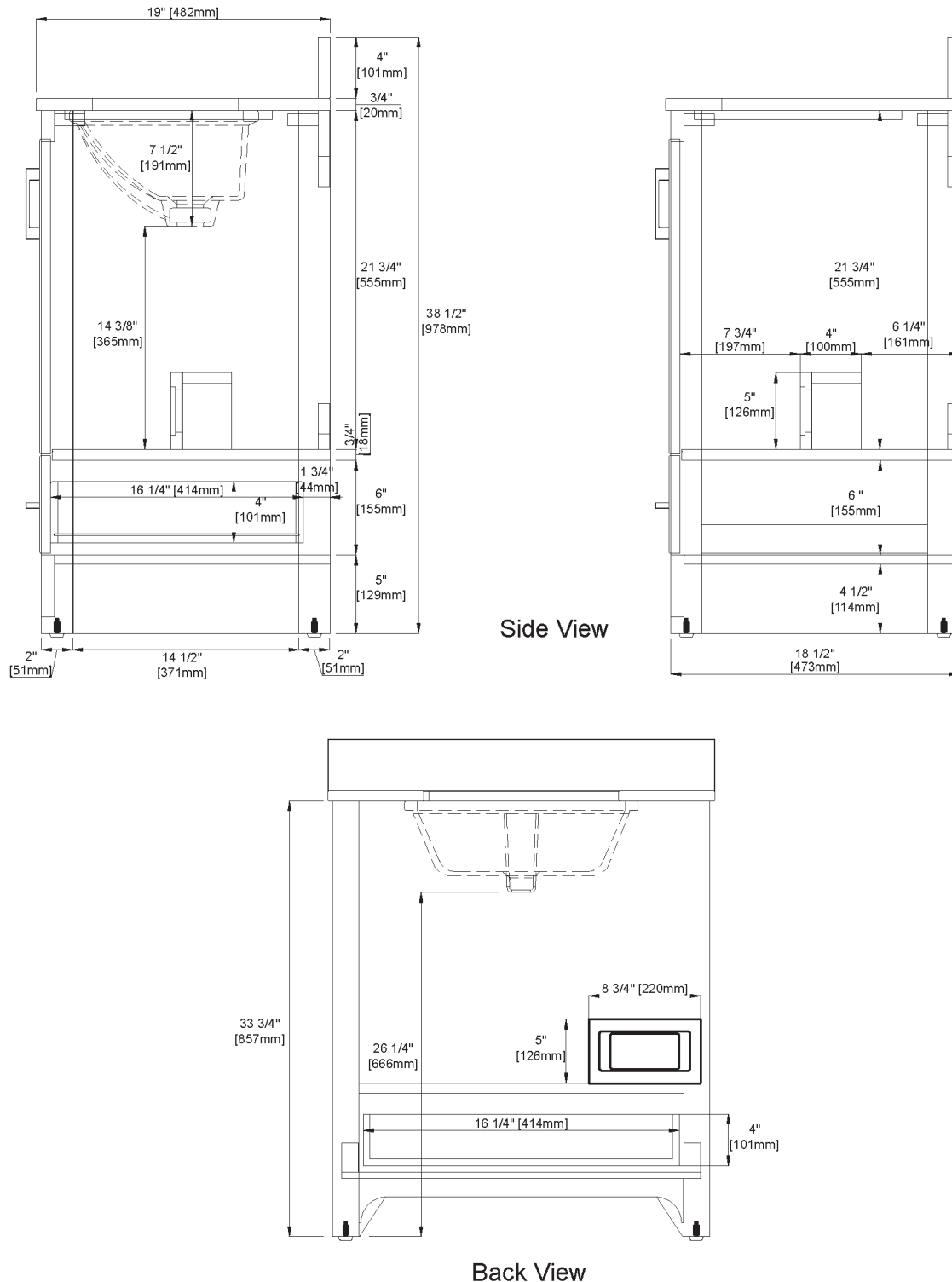
Front View

All dimensions are nominal

2 / 3

30" LUCERNE VANITY

PRODUCT DIMENSIONS



All dimensions are nominal

3/3